

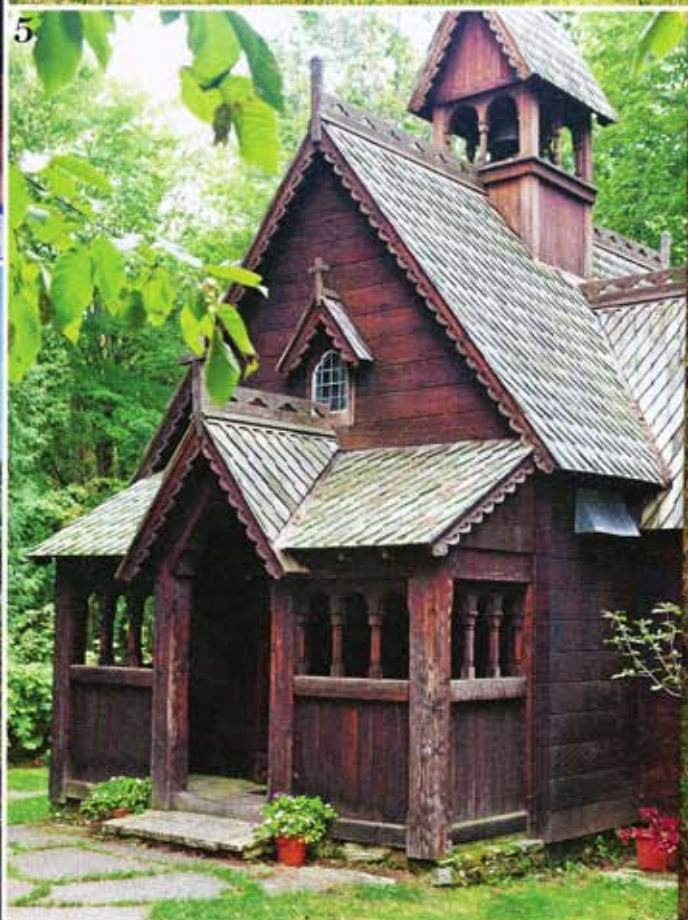
On the Waterfront DOOR COUNTY

Framed by more than 300 miles of picturesque shoreline, Door County is Wisconsin's celebrated Cape Cod of the Midwest—a little sliver of paradise jutting out into the vast waters of Lake Michigan. This scenic peninsula, dotted with quaint villages and lighthouses from Sturgeon Bay to Washington Island, offers a spectacular seaside experience in the midst of America's heartland.

PHOTOGRAPHY STEPHANIE WELBOURNE GRUND







LOCAL ATTRACTIONS

OLD ANDERSON HOUSE MUSEUM (1, 2)

This original 1875 family farmhouse in Sister Bay contains historical photographs, furnishings, and compelling artifacts that reveal the area's rich heritage. The property, which was completely restored in 1994, also includes authentic farm buildings such as a granary, a sawmill, and a blacksmith's barn.

CHERRY ORCHARDS (3) | Door County boasts thousands of cherry trees that are filled with ripe fruit in late July. Many local orchards invite visitors to stop by and pick their own. Exceptional cherry pies, as well as numerous specialty products, are abundant throughout the region.

EAGLE BLUFF LIGHTHOUSE MUSEUM (4) | Perched on a bluff overlooking the waters of Green Bay in Fish Creek, this captivating lighthouse stands as one of thirteen along the county's 300-mile shoreline. Inside, a fascinating museum documents the maritime and navigational history of northeastern Wisconsin and remains a tribute to the keepers who manned the light from 1868 to 1926.

BOYNTON CHAPEL (5) | A beloved tourist stop and favorite venue for weddings, this small wooden church was handcrafted by Donald and Winifred Boynton on the property of their summer residence, which they bequeathed to Lawrence University in 1963. The chapel reflects the style of the Garmo stave church at the Maihaugen museum in Lillehammer, Norway, and features intricate carved-wood furnishings and hand-painted frescoes.

CANA ISLAND LIGHTHOUSE (6) | Take in sweeping views of Lake Michigan from atop one of Door County's most popular lighthouses. Visitors can climb the spiral staircase to reach the gallery deck and experience firsthand the original keeper's arduous duty of fueling the flame.





WHERE TO SHOP & VISIT

CHELSEA ANTIQUES (1) & BLUE WILLOW SHOP (6) | These side-by-side stores in Sister Bay brim with an impressive selection of English and French antiques, decorative accessories, artwork, garden accents, and lavish bath products.

GRECO GALLERY (4) | Located in downtown Sturgeon Bay, this boutique showcases paintings, photography, textiles, pottery, and gifts crafted by seventeen local artists.

FISH CREEK (5) | The picturesque waterside hamlet of Fish Creek, situated in the heart of northern Door County, invites visitors year-round to enjoy the community's proud heritage and appealing selection of outdoor activities, shopping venues, charming restaurants, and relaxing accommodations.

STURGEON BAY (7) | Tucked between the sparkling shores of Green Bay and Lake Michigan, Sturgeon Bay is a destination steeped in maritime history. Here, guests can bask in beautiful sunsets while viewing boats, schooners, and wartime vessels on display at the waterfront. This festive locale also provides plenty of cozy inns, dining options, and state parks.

WHERE TO EAT

AL JOHNSON'S SWEDISH RESTAURANT & BUTIK (2) | Known for its goats grazing atop the building's plush sod roof, this authentic family-owned eatery has become one of Door County's most legendary attractions. Inside, diners enjoy a down-to-earth ambience as the hospitable Scandinavian-garbed staff serve up traditional favorites, including lingonberry pancakes, Swedish meatballs, and whitefish sandwiches.

WILSON'S RESTAURANT AND ICE CREAM PARLOR (3) | This classic 1906 Ephraim landmark continues to enchant patrons with its old-fashioned soda fountain and ice-cream specialties.



2



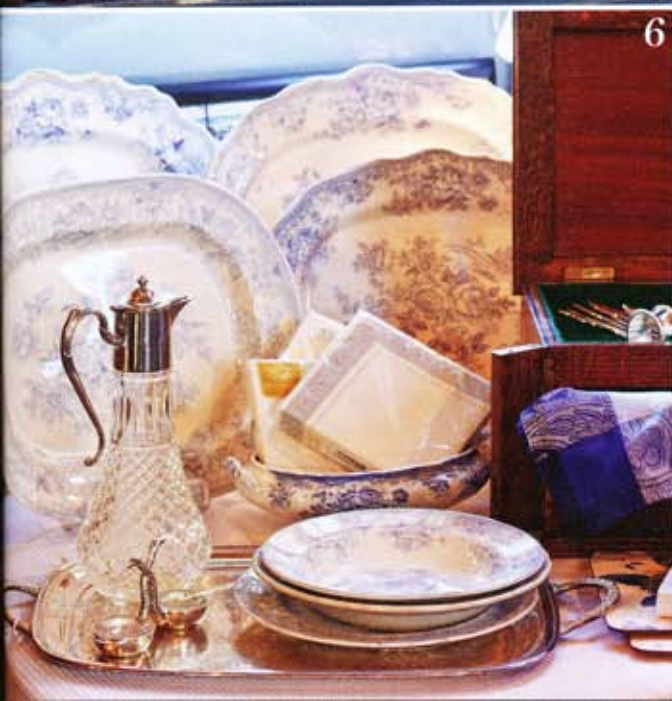
3



4



7



6



5

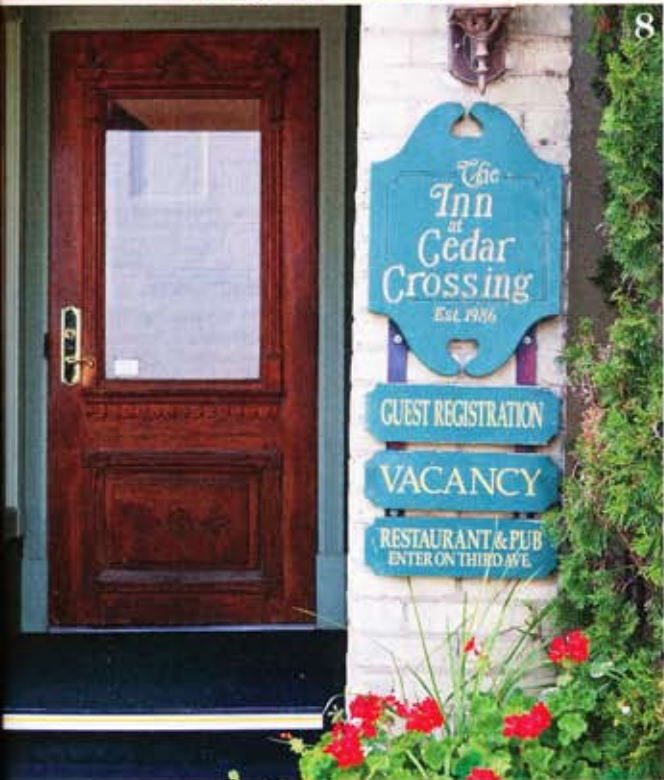
WHERE TO STAY

WHITE LACE INN (1, 2, 3) | A romantic bed-and-breakfast in Sturgeon Bay, the White Lace Inn creates for visitors a memorable atmosphere of gracious elegance and attentive hospitality. Suites and guest rooms are furnished with antiques, fireplaces, and oversized whirlpool tubs to ensure a luxurious stay.

THORP HOUSE INN & COTTAGES (4, 5, 6, 7) | For a nostalgic lodging experience, book a weekend at Fish Creek's Thorp House Inn & Cottages. Five pristine guest rooms (most with fireplaces) provide visitors the cozy comfort of bygone days, and a fresh-baked breakfast beckons every morning.

INN AT CEDAR CROSSING (8) | Open year-round, the warm and welcoming Inn at Cedar Crossing is conveniently nestled in the heart of Sturgeon Bay's downtown district. Nine well-appointed rooms—some containing double whirlpool tubs and fireplaces—encourage guests to indulge in tranquil extravagance. Enjoy fresh regional fare in the restaurant before strolling the waterside neighborhoods outside your door.







BLISS *Victoria*

JULY/AUGUST 2013

*"I hear lake water lapping with low sound by the
shore. ... I hear it in the deep heart's core."*

—WILLIAM BUTLER YEATS

